

2022

Campus Security Act / Crime Reporting
Higher Education & Opportunity Act



HIGHER EDUCATION OPPORTUNITY ACT OF 1965

- CAMPUS SECURITY ACT/ANNUAL CRIME REPORTING
– CALENDAR YEAR 2022
- INVESTIGATION OF MISSING STUDENTS
- FIRE SAFETY REPORT/FIRE LOG AND FIRE STATISTICS
– CALENDAR YEAR 2022
- CAMPUS EMERGENCY RESPONSE
AND EVACUATION PROCEDURES

TABLE OF CONTENTS

Section A: Campus Security Act/Crime Reporting

Important Numbers	1
Statement of Purpose	2
Mission Statement	2
Non-Discriminatory Policy	2
Campus Security Act of 1990	3
Introduction	4
Crime Statistics — 2020-2022	5
Wilson Police Department - Barton College District	
Campus Security Authority	6
Crime Prevention	6
Campus Alerts	7
Campus “Emergency Only” Telephones	7
Campus Security Cameras	9
Daily Crime Log	10
Crime Reporting	10
Megan’s Law	11
Title IX	
Sexual Misconduct and Interpersonal Violence Policies	11
Parental Notification Policy	13
Prevention Education	13
Bystander Intervention	15
Access to College Facilities	16
Residential Facilities and Policies	16
Drug and Alcohol Policies	16
Weapons Possession	17

Section B: Investigation of Missing Students

Investigation of Missing Students	18
---	----

Section C: Fire Safety Report/Fire Log and Fire Statistics

Residence Hall Fire Safety System	19
Campus Housing Fire Statistics — 2020-2022	19
Residence Hall Fire Drills	21
Fire Safety Guidelines and Regulations	21
Fire Safety Education and Training	23
Reporting a Fire	23

Section D: Campus Emergency Response and Procedures

Campus Emergency Response	23
Reporting an Emergency	23
Initiating the Campus Emergency Response	
and Evacuation Procedure	24
Campus Emergency/Crisis	24
Campus Notification System -	25
Disseminating Emergency Information	
Emergency Management Teams	25
Annual Test of Campus Emergency Response	
and Evacuation Procedure	27
Barton College Campus Map Legend	28
Glossary of Terms/Definitions	29

COLLEGE WEB SITE LINK:

<https://www.barton.edu/wp-content/uploads/2023/01/Clery-Report-2022-File.pdf>

IMPORTANT TELEPHONE NUMBERS

Wilson Police Department: Barton College District

- From Off Campus, Dial (252) 399-6911
From On Campus, Dial 6911 or 911

Student Engagement

- Office of Student Engagement
(252) 399-6369
- Office of Campus Life
(252) 399-6369
- Office of Residence Life
(252) 399-6386
- Student Health Services
(252) 399-6397
- Counseling Services
(252) 399-6586
- Access and Accommodations
(252) 399-6496



Statement of Purpose

I

The College is organized to maintain and operate an institution of learning for the education and instruction of qualified students within the framework of the Christian ideals and principles and under the auspices of the Christian Church (Disciples of Christ) in North Carolina.

— *The College Charter*

II

Barton College is a community of learners freely examining the intellectual and cultural experiences of a diverse and interdependent world to understand humanity's rich heritage and to improve the quality of all existence.

Mission Statement

Barton College is committed to providing programs and opportunities to encourage the intellectual, spiritual, social, and cultural development of its students and to challenge them for future leadership and service to their local and global communities.

Non-Discriminatory Policy

Barton College is committed to equality of educational opportunity and does not discriminate against applicants, students, or employees based upon race, color, national origin, religion, gender, sex, age, veteran status, or disability.

Barton College supports the protections available to members of its community under all applicable laws, including, Titles VI and VII of the Civil Rights Act of 1964; Title IX of the Education Amendments of 1972; Section 799A and 845 of the Public Health Service Act; the Equal Pay Act; the Age Discrimination Act of 1975; the Rehabilitation Act of 1973, as amended by the Rehabilitation Act Amendments of 1974; the Vietnam Era Veteran's Readjustment Assistance Act of 1974; the Americans with Disabilities Act of 1992; and Executive Order 11246, as amended by Executive Order 11375.

In compliance with Section 504 of the Rehabilitation Act of 1973, as amended, and the Americans with Disabilities Act of 1992, accommodations of the disabled extend to student programs, employment practices, elimination of physical barriers, and special assistance to disabled students and employees within the College.

This non-discrimination policy covers admission, readmission, access to, and treatment, and employment in college programs and activities, including, but not limited to, academic, admissions, financial aid, any services, and employment.

Any student who believes that he or she has been discriminated against by the College because of his or her race, color, national origin, religion, gender, age, sex, or disability may speak with the Vice President for Student Engagement. Following that discussion, a student who wishes to file a formal grievance will be directed to the grievance procedure in the *Barton Student Bulldog Handbook*. Any college employee desiring information or having a complaint or grievance in regard to these provisions should contact the Office of People and Support.

Section A: Campus Security Act of 1990

Pursuant to Federal Regulation 34.688.47, Barton College makes available to prospective students and employees, distributes to all enrolled students and active employees, an annual security report, which lists information about campus crime and criminal arrests. **The Vice President for Student Engagement is the designated campus authority for the implementation of Federal Regulation 34.688.47.** This annual report is available in brochure form through the Office of Student Engagement, the Office of Admissions, the Office of People and Support, and Wilson Police Department - Barton College District. Barton College also distributes the report electronically. Access to this report is available through the College website link: <https://www.barton.edu/wp-content/uploads/2023/01/Clery-Report-2022-File.pdf>. The College will provide upon request all campus crime statistics as reported to the United States Department of Education.

Barton College, in conjunction with the Crime Awareness and Campus Security Act of 1990, is concerned about the safety and welfare of all campus members and guests. Barton College has developed a series of policies and procedures that are designed to ensure that every possible precautionary measure is taken. In the interest of prevention, all members of the campus community are responsible for a number of measures to ensure that they and their possessions are adequately protected. Barton College is not liable for damages to vehicles parked on campus or for the loss of content/property from said vehicles. This policy also applies to personal belongings within all College facilities.

Counselors, Police, and members of the Student Engagement Staff are available to assist you.

- **Counseling and Support Services:** This Barton College Crime Report outlines the many counseling and support services available to members of the College community who may be victims of bias-related crimes. The Table of Contents references the page numbers outlining support services related to harassment, sexual assault, College Counseling Services, and county support agencies. The *Barton Student Bulldog Handbook* is another valuable resource and may be accessed through the College website link: <https://www.barton.edu>.
- **Crime Statistics:** Crime statistics (the nature and common circumstances) associated with bias-related crime are found in this brochure on pages 5 and 6.
- **Barton College Security Procedures:** Barton College employs a variety of security procedures. Security procedures are referenced during New Student Orientation, New Student Welcome Days, College Associated Policies and Procedures within the *Barton Student Bulldog Handbook*, the Annual Campus Security Brochure, and the website link: <https://www.barton.edu/wp-content/uploads/2023/01/Clery-Report-2022-File.pdf>.

INTRODUCTION

The Barton College campus consists of more than 25 academic, residential, and recreational buildings and facilities located in the City of Wilson, North Carolina. The College enrolls approximately 1,187 undergraduate students of which approximately 550 are residential students. In addition, the College employs approximately 284 full-time and part-time employees. At Barton College, safety is a primary consideration in the maintenance, grounds keeping, and lighting of the campus. If a Wilson Police Department - Barton College District Officer should discover a broken window or non-functioning light, the officer informs Facilities Services. The Wilson Police Department - Barton College District works closely with the Office of Student Engagement to ensure that safety policies and procedures are uniformly executed and conveyed in a clear and consistent manner to the College students, as well as to its faculty and staff.

CRIME STATISTICS

Offense	On-Campus			** Residential Facilities			Non-Campus			Public Property		
	2020	2021	2022	2020	2021	2022	2020	2021	2022	2020	2021	2022
Murder / Non-Negligent Manslaughter	0	0	0	0	0	0	0	0	0	0	0	0
Negligent Manslaughter	0	0	0	0	0	0	0	0	0	0	0	0
Rape	1	0	1	1	0	1	0	0	0	0	0	0
Fondling	3	2	2	3	1	2	0	0	0	0	0	0
Incest	0	0	0	0	0	0	0	0	0	0	0	0
Statutory Rape	0	0	0	0	0	0	0	0	0	0	0	0
Robbery	0	2	0	0	0	0	0	0	0	0	0	0
Aggravated Assault	0	2	0	0	2	0	0	1	0	0	0	0
Burglary	0	1	0	0	1	0	0	4	0	0	0	0
Motor Vehicle Theft	2	0	0	0	0	0	0	1	0	0	0	0
Arson	0	0	0	0	0	0	0	0	0	0	0	0
Arrests: Illegal Weapons	0	0	0	0	0	0	0	0	0	0	0	0
Disciplinary Referrals: Illegal Weapons	1	0	0	1	0	0	0	0	0	0	0	0
Arrests: Drug Abuse Violations	1	0	5	1	0	5	0	4	0	0	0	0
Disciplinary Referrals: Drug Abuse Violations	1	4	7	1	1	7	0	0	0	0	0	0
Arrests: Liquor Law Violations	2	1	0	1	1	0	4	0	0	0	0	0
Disciplinary Referrals: Liquor Law Violations	62	13	24	62	13	24	0	0	0	0	0	0
Stalking	1	0	0	1	0	0	0	0	0	0	0	0
Domestic Violence	0	0	0	0	0	0	0	0	0	0	0	0
Dating Violence	0	1	3	0	1	3	0	0	0	0	0	0
Hate Crimes: Larceny/Theft	0	0	0	0	0	0	0	0	0	0	0	0
Hate Crimes: Intimidation	0	0	5	0	0	5	0	0	0	0	0	0
Hate Crimes: Vandalism	0	0	0	0	0	0	0	0	0	0	0	0
Hate Crimes: Vandalism - Racial Bias	0	0	1	0	0	1	0	0	0	0	0	0
Unfounded Crimes		0	0		0	0		0	0		0	0

** Crimes reported in the residential facilities column are included in the on-campus category.

*** Unfounded Crime Reports — A crime is considered **reported** when it is brought to the attention of a campus security authority or law enforcement personnel by a victim, witness, other third party, or even the offender. If a reported crime is investigated and found to be false or baseless by law enforcement personnel, it is an **unfounded** report.

I

WILSON POLICE DEPARTMENT - BARTON COLLEGE DISTRICT CAMPUS SECURITY AUTHORITY

Security for the Barton College campus is provided through a contractual agreement between Barton College and the City of Wilson. The Barton College District Office of the Wilson Police Department is operated under the auspices of this agreement and is staffed by sworn police officers employed by the Wilson Police Department. Officers who patrol the campus have the authority and responsibility to investigate and prosecute all crimes, which occur on campus.

The Wilson Police Department - Barton College District is located on the first floor of Waters Hall. Officers are available 24 hours a day, seven (7) days a week, 365 days a year. These officers aid in the enforcement of federal, state, and local statutes and Barton College regulations.

DESCRIPTION OF DUTIES:

There are thirteen (13) well-marked exterior Help-Point boxes on the Barton campus.

- Harper Hall (walkway near Wenger Hall)
- Hackney Library (walkway)
- Hamlin Game Room
- Moye Science Hall/Case Art Building (walkway)
- Ragan Writing Center Parking Lot
- Electric Supply Company Field
- Hines Hall Entrance
- Exterior Entrance - Wenger Hall
- Exterior Entrance - Hilley Hall
- Exterior Entrance - East Campus Suites
- Exterior Entrance - Hackney Hall
- Exterior Entrance - Waters Hall
- Wilson Gymnasium Entrance

These telephone boxes are easily identified by a blue light, which is mounted directly above the box. They can be used to report a criminal incident, fire, or any other type of emergency.

To reach the Barton Emergency Telephone Line from off campus, dial (252) 399-6911; on campus, dial extension 6911. At any time, a student may dial 911 for immediate police assistance.

II

CRIME PREVENTION

We believe that nearly every violation committed on campus is preventable. As part of the College's education mission, the Wilson Police Department - Barton College District Office attempts to educate members of the campus community on how to reduce their chances of suffering from violation of their property or themselves.

The crime prevention program is based upon the dual concepts of eliminating or minimizing criminal opportunities and encourages students and employees to be responsible for their own security and security of others.

The following is a listing of the crime prevention programs and projects employed by Barton College:

- New Student Orientation
 - Residence Hall Security
 - Crime Prevention Presentation
 - New Employee Orientation
 - Printed Crime Prevention Materials
 - Facilities Surveys
 - Rape Awareness/Education and Prevention
 - Everfi – online prevention program
 - Campus Alerts
- Architectural Design: The Wilson Police Department - Barton College District Sergeant makes recommendations related to physical plant and electronic security systems for new and renovated campus facilities.
- Enhanced Emergency Telephone System: All on-campus telephone calls made to the Wilson Police Department - Barton College District Office are identified, and the telephone number and location of the telephone are displayed on a screen to the Wilson Police Department - Barton College District/Staff. This enhanced emergency telephone system was installed to ensure that Wilson Police Department - Barton College District officers know the on-campus origin of an emergency call, even if the caller is unable to communicate verbally.

- **Campus Alerts**

Barton College will issue campus alerts in the form of email messages, use of Social Media, and through the City of Wilson **CodeRED** System, to provide the campus community with information necessary to make informed decisions about health and safety.

- i. Issue a timely warning for any Clery Act crime that represents an ongoing threat to the safety of students or employees.
- ii. Issue an emergency notification upon confirmation of a significant emergency or dangerous situation involving an immediate threat to the health or safety of students or employees occurring on the campus.

- **Campus “Emergency Only” Telephone, Campus Security Cameras, or Related Devices**

Purpose:

Barton College, in conjunction with the Crime Awareness and Campus Security Act of 1990, is concerned about the safety and welfare of all campus members and guests. Barton College has developed a series of policies and procedures that are designed to ensure that every possible precautionary measure is taken. In the interest of prevention, all members of the campus community are responsible for a number of measures to ensure that they and their possessions are adequately protected.

Policy:

Barton College and Wilson Police Department - Barton College District will supervise, monitor, and respond to emergency telephones, camera systems, and intrusion/panic alarms in strategic areas of the campus in an expeditious manner.

Procedure:

— Emergency Telephones

a) Locations

There are thirteen (13) well marked exterior call boxes on the Barton College Campus.

- See page 6 for complete list.

The Wilson Police Department - Barton College District Sergeant makes recommendations related to physical plant and electronic systems for new and renovated campus facilities. Monthly campus inspections/walking tours are conducted by the Vice President for Student Engagement, Wilson Police Department - Barton College District officer(s), and representatives of the Student Government Association during the formal academic calendar, September through May. Monthly inspections will be conducted after dark when at all possible. Monthly inspections provide the opportunity for students and members of the campus community to inspect the effectiveness of these systems, including campus lighting, and to make recommendations to members of Senior Staff and Wilson Police Department - Barton College District.

b) Regular Maintenance and Testing

Wilson Police Department - Barton College District Officers, under the direction of the Supervising Sergeant, shall test all emergency telephones they can access on a monthly basis. Police Officers conducting the monthly test will document the status of the phone on the Wilson Police Department - Barton College District Daily Log. Barton College staff assigned as support staff to the Wilson Police Department - Barton College District Office will submit needed repairs into the Campus Work Order System as required.

c) Response

When an emergency telephone is activated, the call is received by the Wilson Police Officer. Wilson Police will be dispatched/respond to actual calls and no-conversation, silent calls. All calls will be documented in the Daily Wilson Police Department - Barton College District Log.

d) Campus Notification

Information concerning the emergency telephone system is posted on the Barton College website, in the *Barton Student Bulldog Handbook* (Student Handbook), and in the annual *Clery Report/Campus Security Act, Crime Report* (Barton College website)/Brochure.

e) Policy/Procedure Review

The Vice President for Student Engagement, in cooperation with the Wilson Police Department - Barton College District, will be responsible for conducting a needs review based on the following safety/security surveys:

- Monthly telephone/campus lighting inspections noted in section (a).
- Monthly student interviews/Note – The Vice President for Student Engagement and the Wilson Police Department - Barton College District Supervising Sergeant schedule monthly sessions open to all students with the specific purpose of meeting with students regarding campus safety and security. These sessions typically take place at lunch or dinner in the Hamlin Culinary Center. Monthly sessions are documented in the Office of Student Engagement as part of the annual Student Engagement evaluation/program review.
- The Vice President for Student Engagement will be responsible for conducting a needs review based on a documented security survey conducted once every three years.

Campus Security Cameras

Campus Security Cameras are one of multiple campus precautionary measures in use.

a) Locations

- Security cameras will be strategically located to assure maximum coverage of public and common areas of the campus. Security cameras will be placed in the main lobby of most residence halls and strategically located in common areas to assure the privacy of individuals living in residence halls. The Wilson Police Sergeant makes recommendations related to facilities services and electronic systems for new and renovated campus facilities.

b) Monitoring and Response

- When an emergency is observed, Wilson Police will be dispatched/respond to the campus location associated with the campus security camera. All associated responses will be documented in the Daily Wilson Police Department - Barton College District Log.
- The use of campus camera systems shall be limited to legitimate safety and security purposes, including, but not limited to:
 - Property and building protection
 - Alarm verifications
 - Public areas
 - Criminal investigation
 - Traffic - pedestrian and vehicular traffic activity
 - The camera system shall not be used for:
 - Profiling
 - Voyeurism

c) Media Retention and Security Access

- Video/Electronic images are stored on digital video recorders in the server room in Harper Hall.
- Access to digital video recorders is limited to the WPD as authorized by the Barton College District supervising Sergeant and the Vice President for Student Engagement.
- WPD is able to download video images to other media to retain for evidentiary or other law enforcement purposes.

d) Regular Maintenance and Testing

- Maintenance and testing will be conducted as needed by Facilities Services of Barton College.

e) Staff Training

- Newly hired Barton College Police office staff and WPD officers assigned to the Barton College District office will be trained on the camera system as part of the College orientation program.
- Training on systems updates will be conducted as necessary.
- All training will include a review of this policy.

f) Policy/Procedure Review

- The Vice President for Student Engagement and the WPD Supervising Sergeant will conduct an annual review/evaluation at the end of the academic term (typically in June) of incidents and camera locations, as noted in the Student Engagement Annual Strategic Plan/Goals & Objectives.
- The annual evaluation will be documented in the Student Engagement Strategic Plan Annual Assessment.

g) Release of Information/Data

- Any and all recordings, video, audio, electronic or otherwise, shall be the sole property of Barton College.
- Persons requesting access and/or review of stored video/electronic images for any reason must obtain permission from the Vice President for Student Engagement, Chief Financial Officer, Vice President of People and Support, or the College President. Wilson Police Department - Barton College District Officers, or WPD investigative personnel shall facilitate the actual review of the video/electronic media.
- Duplication or printing of stored video/electronic images is prohibited unless approved by the Vice President for Student Engagement.

Daily Crime Log

A crime is entered into the Daily Wilson Police Department - Barton College District Log when it is reported. The crime log is in an electronic format.

III

CRIME REPORTING

Numerous efforts are made to advise members of the campus community on a timely basis about campus crime and crime-related problems. These efforts include the following:

- **Annual Report:** A comprehensive annual report of crime-related information is compiled and published. This annual report is distributed to all enrolled students and current employees and is available upon request.
- **Website Access:** Listed are two websites, which may be accessed in order to learn more about campus crime and crime-related problems. To view the Barton College crime reporting web page, please go to <https://www.barton.edu/wp-content/uploads/2023/01/Clery-Report-2022-File.pdf>.

To view the U.S. Department of Education crime reporting site, go to <https://ope.ed.gov/security>.

- **Special Alert:** If circumstances warrant, a special printed crime alert bulletin can be prepared and distributed either selectively or throughout campus.

IV

MEGAN'S LAW

Megan's Law generally provides for some type of public notification of the whereabouts of convicted sex offenders after their release from prison. Information regarding sex crime offenders is available through the following resources:

- Megan's Law Hotline
1-900-288-3838
(Monday-Friday, 8 a.m.- 5 p.m.)
\$.50 charge per call
- www.parentsformeganslaw.com
- North Carolina Attorney General's Office
(919) 716-6400
- Wilson Police Department - Barton College District Office
(252) 399-6911

V

TITLE IX SEXUAL MISCONDUCT AND INTERPERSONAL VIOLENCE POLICY

Title IX of the Education Amendments of 1972 ("Title IX"), is a Federal civil rights law that prohibits discrimination on the basis of sex in education programs and activities. Under Title IX, discrimination on the basis of sex can include sexual harassment or sexual violence. Sexual violence means physical sexual acts perpetrated against a person's will or where a person is incapable of giving consent, such as rape, sexual assault, sexual battery, and sexual coercion.

For specific policies and procedures pertaining to Title IX Sexual Misconduct and Interpersonal Violence, please refer to the *Barton Student Bulldog Handbook*, Student Code of Conduct and Honor Code.

- Retention of Records Regarding Reports of Sexual Discrimination;
Sexual Harassment and Sexual Violence:

Records related to sexual harassment and sexual violence reports, investigations, and resolutions will be maintained in the Title IX Office. Records shall be maintained in accordance with College records policies, generally five years after the date the complaint is resolved. Records may be maintained longer at the discretion of the Title IX Office, particularly in cases where the parties have continuing affiliation with the College. All records pertaining to pending litigation or a request for records shall be maintained in accordance with instructions from legal counsel.

- Barton College offers prevention education efforts to promote sexual assault awareness through the following programs:

Student Programs

- Educational programs – sexual assault/alcohol and other drugs
- Presentations to students through New Student Orientation
- Presentations to residential students through residence hall programs
- Counseling Services outreach programs

- Violence in relationships
- Campus-wide speakers on related topics
- Staff training
- In-service and on-going meetings with the following:
 - Residence Life
 - Health Services
 - Wilson Police Department - Barton College District

Barton College offers the following counseling services for victims of sexual assault:

- | | |
|--|--|
| <ul style="list-style-type: none"> • Title IX Office
Room 313, Harper Hall
(252) 399-6330 | <ul style="list-style-type: none"> • Wilson Medical Center
1705 Tarboro St. SW
(252) 399-8040 |
| <ul style="list-style-type: none"> • Lee Student Health Center
(252) 399-6397 | <ul style="list-style-type: none"> • Wilson Police Department - Barton College District Office
Waters Hall
(252) 399-6911 |

The rape or sexual assault should be reported to Wilson Police Department - Barton College District officers.

This is important even if you do not plan to prosecute. Once a report is made with the police, your identity cannot be guaranteed to remain anonymous as they are required by law to investigate all reported criminal activity. Consider contacting a counselor for confidential reporting. Remember, you did not deserve or ask to be assaulted. If you were a victim of a violent crime, please seek help as noted above. Residence Life and Wilson Police Department - Barton College District are also always available to assist you in finding the resources needed.

Other Resources:

Those who have experienced sexual assault are encouraged to use the following campus and community counseling resources:

- The Barton College Counseling Services
Lee Student Health Center
(252) 399-6586
- The Wesley Shelter
106 Vance Street, Wilson, N.C.
(252) 291-2344
- The Beacon Center
500 Nash Medical Arts Mall
Rocky Mount, N.C.
1-888-893-8640

The College will, whenever possible, offer emotional support to person(s) filing criminal charges or who have experienced sex offenses through any of the following:

- Student Health Services in the Lee Student Health Center (which provides assistance to members of the College community in contacting the State Health Department or any other off-campus agency to assist students), and Subject to available space, the Title IX Office, Office of Residence Life, and appropriate academic department can also assist in making reasonable accommodations that may be needed relative to relocation of housing, academic program adjustments, or other as applicable.

Parental Notification Policy

Barton College reserves the right to notify parents, guardians, designated emergency contacts or other family when it determines the circumstances warrant such notification including, but not limited to:

Barton College will notify parents/legal guardians of students under the age of 21

- Following the first violation of the Barton College drug policy.
- Following the second violation of the Barton College alcohol policy.

For any student, regardless of age, that is in a situation that is threatening to their own health or safety situation or placed another in a situation that is threatening to their health or safety, both the parents and any “emergency contact” may be notified. This may include any referral to any wellness center for alcohol or drug assessment.

When the Vice President for Student Engagement or designee determines that circumstances exist where it is in the best interest of the student and the College to notify the parent.

If it is deemed by the Vice President for Student Engagement or designee that it may be counter-productive to notify a parent, then the procedures may be altered as necessary.

PREVENTION EDUCATION

Barton College offers prevention education efforts to promote sexual assault awareness through the following programs:

- **Student Programs**

Educational programs – sexual assault/alcohol and other drugs

- Presentations to students through New Student Orientation
- Presentations to residential students through residence hall programs

Counseling Services outreach programs

- Self-esteem issues
- Healthy relationships
- Violence in relationships

Campus-wide speakers on related topics
Presentations to Student Athletes
Presentations to Fraternities and Sororities

- **Staff Training**

Presentations during Faculty and Staff Training (FAST) Day

On-going training for campus employees

In-service and on-going meetings with the following:

- Residence Life
- Health Services
- Wilson Police Department - Barton College District

Victims of rape or sexual assault should contact a close friend or relative for support. This is not the time to be alone. The victim should also seek immediate medical attention. Do not shower or change clothing. Physical evidence is very important. All victims should be encouraged to report all incidents of sexual assault or rape to appropriate staff persons. All staff persons receiving information or allegations should respond with the utmost sensitivity and care for the victims affected. Special attention should be given to safeguard privacy and confidentiality for all people involved in the incident/alleged incident. Try to help the victim record as many details as possible regarding person(s), place, scene, etc., that will help with the apprehension of the alleged assailant.

All administrators, faculty, staff, and students are subject to these policies. The College will also take constructive action against non-members of the College community who are subject to these policies. Individuals who violate this policy are subject to discipline up to and including discharge, expulsion, or other appropriate sanctions, in response to violations of student living standards, sexual abuse, sexual harassment, rape, and sexual assault, as well as other serious complex criminal matters.

Through the Office of the Vice President for Student Engagement, Wilson Police Department - Barton College District, or the Counseling Center, the College will support and encourage any student(s) who chooses to exercise his/her right to file criminal charges against another individual(s). Barton College reserves the right, as a separate jurisdiction, to conduct judicial proceedings according to the procedures outlined in the College Associated Policies and Procedures within the *Barton Student Bulldog Handbook*, either before, during, or at the completion of the extra-College criminal proceedings.

Victims of rape or sexual assault should contact one of the following services as soon as possible:

- Lee Student Health Center
(252) 399-6397
- Wilson Medical Center, 1705 Tarboro St. SW
(252) 399-8102
- Wilson Police - Barton College District Office, Waters Hall
(252) 399-6911
911 in an Emergency

The rape or sexual assault should be reported to Wilson Police Department - Barton College District. This is important even if you do not plan to prosecute. Consider contacting a counselor. Remember, you did not deserve

or ask to be assaulted. You were a victim of a violent crime. Residence Life and Wilson Police Department - Barton College District are always available to assist you in finding the resources needed.

Through Student Health Services (which provides assistance to members of the College community in contacting the State Health Department or any other off-campus agency to assist students), and the Lee Student Health Center, the College will, whenever possible, offer emotional support to person(s) filing criminal charges or who are victims of sex offenses. Subject to available space, the Office of Residence Life and the appropriate academic department, will, whenever possible, grant victims of sex offenses the option of relocating their campus housing assignment, or reasonable academic program adjustments.

Accommodations or protective measures are provided if the victim requests them and if they are reasonably available, regardless of whether the victim chooses to report the crime to Wilson Police Department - Barton College District or local law enforcement. Protective measures include, but are not limited to:

- Academic Accommodations
- Financial Aid-related services and information; loan repayment terms, etc.
- Leave of Absence
- Withdrawing from a course
- Relocating to a different section of a course
- Living Accommodations
- Transportation Accommodations
- Work Accommodations
- No contact directive between two community members
- Medical Assistance
- Counseling Assistance
- Protection against retaliation

When a student or an employee reports to Barton College that the student or employee has been a victim of dating violence, domestic violence, sexual assault, or stalking, whether the offense occurred on or off campus, Barton College will provide the student or employee with a written copy of the Campus Crime Report; enclosed, is the written explanation of the student's or employee's rights and options.

Bystander Intervention:

Proactive Bystander Intervention may be an effective tool to combat all forms of violence including dating violence, domestic violence, sexual assault, and stalking. All members of the campus community have the responsibility to act when confronted with crimes of violence; ways to be a proactive bystander include, but are not limited to:

- Believe violence is unacceptable and say it out loud
- Treat people with respect
- Speak up when you hear people making statements that blame victims
- Talk with friends about confronting violence against others
- Encourage friends to trust their instincts
- Be a knowledgeable resource for victims
- Don't laugh at sexist jokes or comments
- Look out for friends at parties and bars

- Educate yourself and your friends
- Use campus resources
- Attend an awareness event
- Empower victims to tell their stories

VI

ACCESS TO COLLEGE FACILITIES

Most College buildings and facilities are accessible to members of the campus community and both guests and visitors during normal hours of business, Monday through Friday, and for limited hours on Saturday and Sunday during periods of time the College is in normal operation. For information regarding access to campus facilities, contact Wilson Police Department - Barton College District at (252) 399-6911.

VII

RESIDENTIAL FACILITIES AND POLICIES

The Barton College residence community houses students in varied accommodations ranging from single and double dormitory-style rooms to fully furnished apartment-style suites. Services and programs intended to enhance the quality of student life and to assure the security and safety of the resident student body is a priority for the residence life administration.

Residential facilities are served by professional staff members and resident assistants. At least one professional staff member is on duty at all times, 24 hours a day, seven (7) days a week.

Security and safety policies and procedures, especially regarding locking individual rooms and building doors and related precautions, are discussed with residents in crime prevention seminars, in routine floor meetings conducted by the residence life staff, and in printed material that is posted and distributed by the staff.

VIII

DRUG AND ALCOHOL POLICIES

Barton College complies with federal, state, and local laws including those which regulate the possession, use, and sale of alcoholic beverages and controlled substances. Barton College has adopted policies as part of the Drug-Free Schools and Communities Act Amendments of 1989, and because of the institution's commitment to preserving the health and well being of its students and employees, and to provide a safe environment for both learning and employment.

Barton College prohibits the unlawful manufacture, distribution, dispensation, presence, or use of alcohol, illegal drugs, or other controlled substances on its property or at any of its activities. The manufacture, use, possession, sale, purchase, or transfer of illegal drugs by a student or employee is prohibited.

Students and employees are expected to abide by all state and federal regulations regarding alcohol, drugs, or controlled substances. Applicable statutes are available for review in the College library. All employees are required to notify the College of any conviction of a criminal drug statute within five days, including driving while impaired (DWI).

The College reserves the right, as a separate jurisdiction, to conduct judicial proceedings according to the procedures outlined in the Student Handbook before, during, or at the completion of the extra-College criminal proceedings.

Health Risks:

Use of cannabis (marijuana), inhalants, cocaine, and other stimulants, depressants, hallucinogens, narcotics, designer drugs, and alcohol all have associated health risks. The use and/or abuse of these drugs threaten both mental and physical stability. Virtually all systems of the body (musculoskeletal, nervous, circulatory, respiratory, urinary, digestive, reproductive, and integumentary) can be adversely affected by alcohol and drug use and abuse. Overdoses of drugs and/or alcohol may cause death. The risk of contracting Acquired Immune Deficiency Syndrome (AIDS) or AIDS-causing human immunodeficiency virus (HIV) increases with intravenous drug use.

The Barton College Counseling Center and Lee Student Health Center serve as alcohol and other drug information /education resources.

IX

WEAPONS POSSESSION

The use and/or possession of firearms, weapons (includes air rifles, handguns, and paintball guns), or hunting materials, other than by authorized police agencies, is prohibited on campus grounds or in the facilities of Barton College. This includes the illegal possession of explosives and dangerous chemicals, and includes fireworks of any kind.

Pursuant to North Carolina General Statutes 116-143.1 and in reference to House Bill 937 signed into law and placed into effect July 29, 2013, Barton College affirms its right as a private institution to restrict the possession or use of a weapon on college property or property under the control of the College. This is consistent with the College's purpose and mission.

For the complete text of this College Regulation, reference the *Barton College Regulatory Document 5-7, Weapons*. This policy includes House Bill 937 that expands the allowable concealed carry locations to institutions of higher education or private institutions that have not otherwise restricted concealed carry abilities on campus with an institution specific policy.

Barton College Regulatory Document 5-7 Weapons, prohibits the use of a weapon on college property or property under the control of the College.

This policy DOES NOT apply to:

- A weapon used solely for educational or school-sanctioned ceremonial purposes or used in a school-approved program conducted under the supervision of an adult whose supervision has been approved by school authority.
- Armed forces personnel, officers and soldiers of the militia and national guard, law enforcement personnel, and any private police employed by an educational institution, when acting in the discharge of the official duties.

Section B: Investigation of Missing Students

In compliance with the Higher Education Opportunity Act (Public Law 110-315), Barton College implements the following Public Safety Policy on Missing Students:

In the case of a missing student(s), the investigation of such incidents will be conducted by local law enforcement agencies. When a student who resides in an on-campus student housing facility is determined to have been missing for twenty-four (24) hours, missing student reports will be referred immediately to the Wilson Police Department, Barton College District Office, for investigation.

“Missing Student” means any actively enrolled student attending Barton College who resides in a facility owned or operated by Barton College and who is reported to Barton College as missing from his or her on-campus residence.

Barton College highly recommends that all residential students register a confidential contact person to be notified in the case that the student is determined to be missing. Confidential Contact Registration Cards are available in the Office of Residence Life, Hamlin Student Center; the Office of Student Engagement, Harper Hall - Room 309; or by contacting any member of the Residence Life Staff. Confidential Contact Information is most effective when it is updated annually. Only authorized campus officials and law enforcement officers in the furtherance of a missing person investigation may have access to this information.

The law requires that the College notify parents or guardians of a student under the age of eighteen (18) years of age, who is missing or reported to be missing.

Local law enforcement agencies will be notified of all students missing or reported to be missing, even if they have not registered a contact person.

Individuals should report that a student has been missing for twenty-four (24) hours to the following Barton College Campus Officials:

- Wilson Police Department - Barton College District Office
Waters Hall
(252) 399-6911
- Director of Housing and Residence Life
Hamlin Student Center
(252) 399-6366
- Vice President for Student Engagement
Harper Hall, Room 309
(252) 399-6315

Section C: Campus Fire Safety Provisions

- Residence Hall Fire Safety System

Barton College employs a Honeywell Fire Alarm System, model NO: FS-90 Plus, in each of the five campus residence halls. The system transmission is digital. This system is monitored 24 hours per day, 365 days a year the Facilities Services Office. The system employs a combination of manual pull stations, ion detectors, heat detectors, photo detectors, as well as water-flow switches. In case of an alarm, the Wilson Fire Department responds automatically.

- Campus Student Housing Fire Statistics

Wenger Hall:	2020	2021	2022
Number of Fires	0	0	0
Cause of Fire	N/A	N/A	N/A
Number of people with fire-related injuries that resulted in medical treatment at a medical facility	0	0	0
Number of fire-related deaths	0	0	0
Value of property damaged	\$0	\$0	\$0
Wenger Hall fire safety system description: Honeywell, Model NO: FS-90 Plus, 14 manual pull stations, 163 ion detectors, and 3 heat detectors.			

Hilley Hall:	2020	2021	2022
Number of Fires	1	0	0
Cause of Fire	Student Prank: Inserted copper penny into hallway electrical outlet.	N/A	N/A
Number of people with fire-related injuries that resulted in medical treatment at a medical facility	1	0	0
Number of fire-related deaths	0	0	0
Value of property damaged	\$40 (forty)	\$0	\$0
Hilley Hall fire safety system description: Honeywell, Model NO: FS-90 Plus, 20 manual pull stations, 129 ion detectors, 6 duct detectors, and 5 heat detectors.			

Hackney Hall:	2020	2021	2022
Number of Fires	0	0	0
Cause of Fire	N/A	N/A	N/A
Number of people with fire-related injuries that resulted in medical treatment at a medical facility	0	0	0
Number of fire-related deaths	0	0	0
Value of property damaged	\$0	\$0	\$0
Hackney Hall fire safety system description: Honeywell, Model NO: FS-90 Plus, 9 manual pull stations, 79 ion detectors, 1 duct detector, and 2 heat detectors.			

Waters Hall:	2020	2021	2022
Number of Fires	0	0	0
Cause of Fire	N/A	N/A	N/A
Number of people with fire-related injuries that resulted in medical treatment at a medical facility	0	0	0
Number of fire-related deaths	0	0	0
Value of property damaged	\$0	\$0	\$0
Waters Hall fire safety system description: Honeywell, Model NO: FS-90 Plus, 14 manual pull stations, 121 ion detectors, and 2 heat detectors.			

East Campus Suites:	2020	2021	2022
Number of Fires	0	0	0
Cause of Fire	N/A	N/A	N/A
Number of people with fire-related injuries that resulted in medical treatment at a medical facility	0	0	0
Number of fire-related deaths	0	0	0
Value of property damaged	\$0	\$0	\$0
East Campus Suites fire safety system description: Honeywell, Model NO: FS-90 Plus, 8 manual pull stations, 136 photo detectors, 1 water-flow switch, and 3 heat detectors.			

- Residence Hall Fire Drills

Fire drills are conducted annually during the academic calendar year (August – May). Fire drills may be announced or unannounced.

- Fire Safety Guidelines and Regulations

Candles, incense, cigarettes, halogen lamps, space heaters, and any appliance with an open burner are fire hazards and are not permitted in residence halls on the campus of Barton College. Smoking (cigarettes, cigars, pipes, vape pens, etc.) in residence halls' common areas and/or rooms is prohibited. Tampering with fire extinguisher(s), hoses, fire alarms, or other fire safety equipment is prohibited and punishable under the law; this includes, but is not limited to, the removal, destruction, damage or the unauthorized use of fire safety equipment.

- Do:**
- All students should use UL-listed power strips and/or stations when additional electrical outlets are required. Power strips/stations with on/off switches and surge protectors are recommended.
 - Use only metal wastebaskets.
 - Keep fire doors in corridors and stairwells closed at all times.
 - Keep furniture, tapestries, or wall hangings away from doorways.
 - Keep less than 20% of the total wall area covered with combustible materials.
 - Report any safety or fire hazards to the Office of Residence Life staff immediately.
 - Keep hallways, breezeways, and walkways clear of personal items.

- Don't:**
- Bring gasoline or any other volatile liquids into the residence halls.
 - Overload outlets.
 - Suspend items from ceilings, sprinkler system or cover air/heat vents with plastic trash bags or suspend air fresheners.
 - Use extension cords.
 - Leave permitted appliances unattended while on and/or plugged in.
 - Use an open coil appliance (such as toaster, toaster oven, etc.)

- Procedures for Residence Hall Evacuation

Fire Safety Procedures for the evacuation of residence halls must be strictly observed.

- Wear a coat and shoes.
- Turn off light(s).
- Lower or close windows.
- Leave room, close all doors.
- If on a floor other than your own, borrow articles of clothing and leave the building with the group on that floor and join your own group at their appointed evacuation station.
- Walk quickly and quietly to your designated evacuation station. Remain silent - roll call will be conducted.
- Remain in a group until RAs give the "all clear."
- Proceed quietly into building, and return to your room.

Recommended

- Upon check-in to the residence hall, you should:
 - Locate the exit closest to your floor, and also find an alternate exit.
 - Keep your room key within easy access at night.
 - Read the fire evacuation route located on each floor.
- In case of fire, remember:
 - Crawl instead of walking upright.
 - Check to see if doors are cool before opening.
 - Do not use elevators.
- If trapped in your room:
 - Call the Fire Department at 9-911 and let them know the location.
 - Seal off door and window cracks to keep smoke out.
 - If possible, wet walls and furnishings.
 - Tie a wet towel around your nose and mouth.

Designated Assembly Areas for Residence Halls

- East Campus Suites
Go to the grass area on the side closest to the KRIC.
- Hackney Hall
Go directly in front of the Hamlin Student Center Campus Store and stay on the enclosed sidewalk.
- Hilley Hall
Go to the grass area between Hardy Alumni Hall and Harper Hall.
- Waters Hall
Go to the grass hill area next to the Nixon Nursing Building.
- Wenger Hall
Go to the front of Harper Hall on the sidewalk facing Harper / Wenger Hall parking lot.
- Stephenson Apartments - Vance Street
Go to the area between the Hackney Library and the Campion Center
- Kenan Street Apartments
Go to the grassy area at the intersection of Kenan Street and A.C.C. Drive

- Fire Safety Education and Training

Members of the Student Engagement staff receive fire safety training annually; this annual training is open to participation by all members of the Barton College faculty/staff/administration. Residence Life staff present a Fire Safety Education orientation to all residential students at the beginning of each semester (fall & spring); this orientation includes, but is not limited to, residence hall *Fire Safety Guidelines and Regulations and Fire Drill and Evacuation Procedures*.

- Reporting a Fire

Individuals should report all incidents of fire to the following Barton College Campus Officials:

- Wilson Police Department - Barton College District Office, Waters Hall
(252) 399-6911
- Director of Housing and Residence Life, Hamlin Student Center
(252) 399-6366
- Vice President for Student Engagement, Harper Hall
(252) 399-6315

NOTE: *Fire Safety Guidelines and Regulations and Fire Drill and Evacuation Procedures* are reviewed annually. Changes to fire safety guidelines, regulations and procedures are made routinely in consultation with the Wilson Fire Department and the Wilson Police Department.

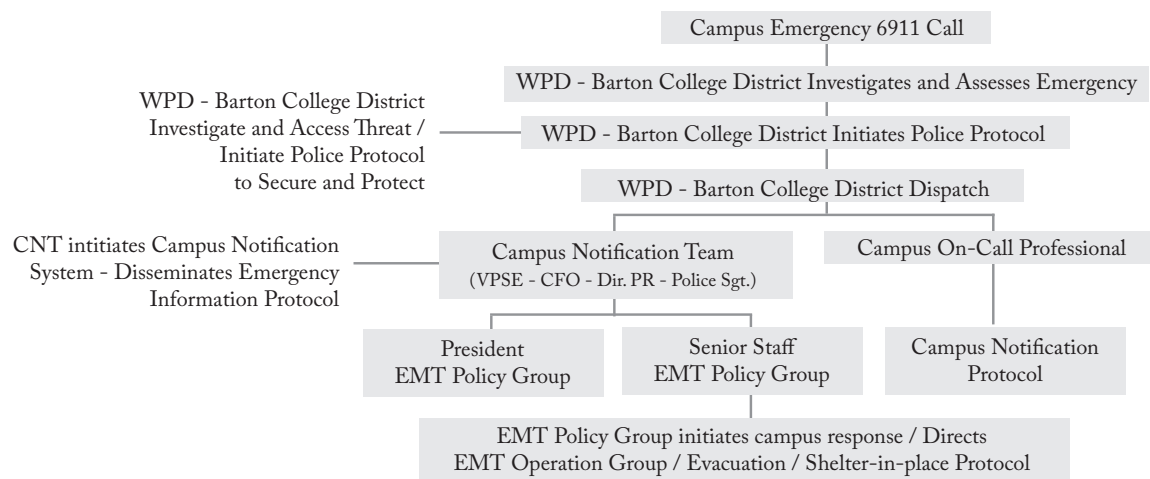
Section D: Campus Emergency Response and Evacuation Procedures

- Reporting an Emergency

First Response — CALL WILSON POLICE — on campus, dial — 6911
 Barton College / Campus Exterior — Call Boxes
 Telephone — (252) 399-6911

Do not hang up until instructed to do so by Police / Dispatcher / EMS.

- Wilson Police Department - Barton College District officer(s) investigate and assess the emergency
- Wilson Police Department - Barton College District initiates police protocol (secure and protect)
- Wilson Police Department - Barton College District Dispatcher initiates the Campus Notification System



Initiating the Campus Emergency Response and Evacuation Procedure

All members of the campus community and public may report an emergency to a campus individual.

- Individuals are encouraged to report emergencies immediately to Wilson Police Department - Barton College District (Waters Hall - telephone (252) 399-6911 /on campus, dial 6911).
- Wilson Police Department - Barton College District will investigate and assess emergency.
 - In consultation with the EMT-Policy Group or appropriate Vice President, Wilson Police Department - Barton College District will declare an emergency.
 - An Emergency Response will likely fall into two categories:
 - 1) Campus Evacuation or Limited Campus Evacuation (buildings, grounds, etc.)
 - 2) Shelter-In-Place
- The EMT-Policy Group will initiate and implement the Campus Emergency Response and Evacuation Protocol.
- The type and severity of the emergency will determine what response is warranted by the appropriate EMT-Operational Group(s).
- Initiate the Campus Notification System
 - Vice President for Administration and Finance
 - Vice President for Student Engagement
 - Director of Public Relations
 - Supervising Wilson Police Department - Barton College District Sergeant
- Campus Emergency/Crisis

The origin of causative factors in or leading to an emergency/crisis may be man-made or natural, or a combination of both. Campus Emergency Response and Evacuation Procedures will be activated as a result of one or more, singularly or in combination, events or situations, which include, but are not limited to, the following:

- Fires
- Explosions
- Threats (Shooter, Bombs, etc.)
- Hazardous Materials (Chemical, Biological, Radiological, etc.)
- Utility Interruptions (Electrical, Gas, Water, etc.)
- Communications Failures
- Civil Disturbances or Disruptions
- Severe Weather (Ice Storms, Flooding, Hurricanes, Tornadoes, Earthquakes, etc.)

- Emergency Response

The primary goal of the Campus Emergency Response and Evacuation Procedures is to assure the safety and health of students, faculty, staff, and the public, and to protect and safeguard property, resources, and the integrity of the College and its programs. Barton College will, without delay, and taking into account the safety of the community, determine the content of the notification and initiate the campus notification system, unless the notification will, in the professional judgment of responsible campus and/or civil authorities, compromise efforts to assist victims or to contain, respond to, or otherwise mitigate the emergency.

- Campus Notification System – Disseminating Emergency Information

Barton College employs a number of notification options when man-made or natural causative factors require immediate campus communication. In consultation with the College President and/or the appropriate Vice President, the Director of Public Relations will initiate the campus notification system. These options can include, but are not limited to, the following:

- Barton College External Website (www.barton.edu)
- Barton College email system
- The Campus Severe Weather Hotline
 - Students (252) 399-6868
 - Faculty/Staff (252) 399-6600
- Local and Regional Television broadcasts
- CodeRed Emergency Notification System – this system sends immediate text messages to members of the College community who have pre-registered cell phone numbers for this purpose.

- Emergency Management Teams

The College is organized into Emergency Management Teams (EMT) responsible for implementing Campus Emergency Response and Evacuation Procedures, as follows:

- EMT (Policy Group)

This group functions to provide overall policy guidance and perspective in planning for and responding to emergencies.

 - College President
 - Vice President for Academic Affairs
 - Vice President for Student Engagement
 - Vice President for People and Support
 - Vice President for Enrollment and Marketing
 - Vice President for Institutional Advancement
 - Chief Financial Officer

— EMT (Operation Group)

These groups function to carry out the operational aspects of the Plan and/or as directed by the EMT (Policy Group). Individual EMT groups are subject to change in make-up and, depending upon the nature of the emergency, one or more groups may be combined or merged.

ADMINISTRATION/MANAGEMENT

- Chief Financial Officer
- Executive Director of Technology Services
- Director of Athletics
- Vice President for People and Support

PUBLIC RELATIONS

- Vice President for Enrollment and Marketing
- Interim Executive Director of Marketing and Communications and Director of Public Relations
- Senior Director of Marketing

INSTRUCTIONAL PROGRAMS

- Vice President for Academic Affairs
- Dean, School of Health Sciences
- Dean, School of Business & Innovation
- Dean, School of Education & Social Sciences
- Dean, School of Arts & Humanities
- Registrar
- Dean of Hackney Library

MEDICAL SERVICES

- Executive Director of Student Health Services

FOOD SERVICES

- Director of Culinary Services

CAMPUS COUNSELING / ADA

- Campus Counselor
- Coordinator of Access and Accommodations

PHYSICAL PLANT

- Director of Facilities Services

WILSON POLICE DEPARTMENT - BARTON COLLEGE DISTRICT

- Supervising Police Sergeant

BUSINESS OPERATIONS

- Vice President for Administration and Finance

RESIDENCE LIFE

- Vice President for Student Engagement
- Directors
- Coordinators

- Annual Test of Campus Emergency Response and Evacuation Procedure

A test exercise of the Campus Emergency Response and Evacuation Procedure will be conducted annually. The annual test will include:

- The publication of these emergency procedures
- A description of the exercise
- The date and time the exercise was conducted
- Whether the test exercise was announced or unannounced



BARTON Campus Map

COLLEGE



GLOSSARY OF TERMS / DEFINITIONS

Awareness Programs: “Awareness Programs” means, community-wide or audience-specific programming, initiatives, and strategies that increase audience knowledge and share information and resources to prevent violence, promote safety, and reduce perpetration. * PaperClip Communications, 2015, VAWA Compliance, Policy & the Law, page 90.

Bystander Intervention: “Bystander Intervention” means, safe and positive options that may be carried out by an individual or individuals to prevent harm or intervene when there is a risk of dating violence, domestic violence, sexual assault, or stalking. Bystander intervention includes recognizing situations of potential harm, understanding institutional structures and cultural conditions that facilitate violence, overcoming barriers to intervening, identifying safe and effective intervention options, and taking action to intervene. * PaperClip Communications, 2015, VAWA Compliance, Policy & the Law, page 90.

Campus Security Authorities: “Campus Security Authorities” means that Campus Crime Reports will include all crimes reported to Campus Security Authorities, which include the following four groups:

1. A campus police or security department
2. Any individuals who have a responsibility for campus security but do not constitute a police or security department
3. Any individual or organization specified in an institution’s statement of campus security policy as an individual or organization to which students and employees should report criminal offenses
4. An official of an institution who has significant responsibility for student and campus activities, including student discipline and campus judicial proceedings

Consent: “Consent” means the affirmative, unambiguous, and voluntary agreement to engage in a specific sexual activity during a sexual encounter. An individual who is asleep, or mentally or physically incapacitated, either through the effect of drugs or alcohol or for any other reason, or who is under duress, threat, coercion, or force, is not able to consent. Further, one is not able to infer consent under circumstances in which the consent is not clear, including but not limited to the absence of “no” or “stop,” or the existence of a prior or current relationship or sexual activity.

Dating Violence: “Dating Violence” means controlling, abusive, and aggressive behavior in a romantic relationship. It can happen in straight or gay relationships. It can include verbal, emotional, physical, or sexual abuse, or a combination.

Domestic Violence: “Domestic Violence” means abuse that happens in a personal relationship. It can happen between past or current partners, spouses, or boyfriends and girlfriends. Domestic violence affects men and women of any ethnic group, race, or religion; gay or straight; rich or poor; teen, adult, or elderly. The abuser may use fear, bullying, and threats to gain power and control over the other person. He or she may act jealously, controlling, or possessive.

Ethnicity Bias: “Ethnicity Bias” means a performed negative opinion or attitude toward a group of people whose members identify with each other, through a common heritage, often consisting of a common language, common culture (often including a shared religion) and/or ideology that stresses common ancestry. The concept of ethnicity differs from the closely related term race in that “race” refers to grouping based mostly upon biological criteria, while “ethnicity” also encompasses additional cultural factors. *The Federal Bureau of Investigation’s “Hate Crime Data Collection Guidelines and Training Manual,” December 19, 2012.

Fondling: “Fondling” means the touching of the private body parts of another person for the purpose of sexual gratification, without the consent of the victim, including instances where the victim is incapable of giving consent because of his/her age or because of his/her temporary or permanent mental incapacity.

Incest: “Incest” means sexual intercourse between persons who are related to each other within the degrees wherein marriage is prohibited by law.

Primary Prevention Programs: “Primary Prevention Programs” means programming, initiatives, and strategies informed by research or assessed for value, effectiveness, or outcome that are intended to stop dating violence, domestic violence, sexual assault, and stalking before they occur through the promotion of positive and healthy behaviors that foster healthy, mutually respectful relationships and sexuality, encourage safe bystander intervention, and seek to change behavior and social norms in healthy and safe direction. * PaperClip Communications, 2015, VAWA Compliance, Policy & the Law, page 91.

Proceeding: “Proceeding” means the official record of the College Student Conduct Process leading to the conclusion of a grievance or complaint.

Rape: “Rape” means penetration, no matter how slight, of the vagina or anus with any body part or object, or oral penetration by a sex organ of another person, without the consent of the victim.

- “Mentally disabled” means a victim who suffers from mental retardation, or a victim who suffers from a mental disorder, either of which temporarily or permanently renders the victim substantially incapable of appraising the nature of his or her conduct, or of resisting the act of vaginal intercourse or a sexual act, or of communicating unwillingness to submit to the act of vaginal intercourse or a sexual act.
- “Mentally incapacitated” means a victim who due to any act committed upon the victim is rendered substantially incapable of either appraising the nature of his or her conduct, or resisting the act of vaginal intercourse or a sexual act.
- “Physically helpless” means a victim who is unconscious, or a victim who is physically unable to resist an act of vaginal intercourse or a sexual act or communicate unwillingness to submit to an act of vaginal intercourse or a sexual act.
- “Touching” means physical contact with another person, whether accomplished directly, through the clothing of the person committing the offense, or through the clothing of the victim.

Reported Crime: “Reported Crime” means that a crime is considered “reported” when it is brought to the attention of a campus security authority or local law enforcement personnel by a victim, witness, other third party or even the offender.

Unfounded Reported Crime: An “Unfounded” reported crime means a reported crime that is investigated and found to be false or baseless by law enforcement personnel.

Risk Reduction: “Risk Reduction” means options designed to decrease perpetration and bystander inaction, and to increase empowerment for victims in order to promote safety and to help individuals and communities address conditions that facilitate violence. * PaperClip Communications, 2015, VAWA Compliance, Policy & the Law, page 91.

Result: “Result” means the conclusion of the investigative and student conduct process, culminating in an action or determination.

Sexual Assault: “Sexual Assault” means an offense that meets the definition of rape, fondling, incest, or statutory rape as used in the Federal Bureau of Investigation’s URC (Uniform Crime Reporting) program.

Sexual Offenses: “Sexual Offenses” means any sexual act directed against another person, without the consent of the victim, including instances where the victim is incapable of giving consent.

Stalking: “Stalking” means repeated harassment or threatening behavior by an individual, such as following a person, appearing at a person’s home or place of business, making harassing phone calls, leaving written messages or objects, or vandalizing a person’s property, according to the U.S. Department of Justice for Victims of Crime (OVC). Any unwanted contact between two individuals that directly or indirectly communicates a threat or places the victim in fear can be considered stalking. Engaging in a course of conduct directed at a specific person that would cause a reasonable person to fear for a person’s safety or safety of others; or suffer substantial emotional distress. For the purpose of this definition –

- Course of Conduct means two or more acts, including, but not limited to , acts in which the stalker directly, indirectly, or through third parties, by any action, method, device, or means, follows, monitors, observes, surveils, threatens, or communicates to or about a person, or interferes with a person’s property
- Reasonable person means a reasonable person under similar circumstances and with similar identities to the victim
- Substantial emotional distress means significant mental suffering or anguish that may, but not necessarily, require medical or other professional treatment or counseling

Statutory Rape: “Statutory Rape” means sexual intercourse with a person who is under the statutory age of consent.



BARTON
COLLEGE

College Website Link:

<https://www.barton.edu/wp-content/uploads/2023/01/Clery-Report-2022-File.pdf>